

INTERNAL LAUNCH BRIEFING

HIP6 is a smart measuring instrument helping orthopedic surgeons to consistently and intuitively getting the component positioning right. To obtain good and accurate outcomes in hip arthroplasty patient leg length and offset can easily be controlled. The registration concept allows the surgeon to operate in a lateral position without reposition the patient.

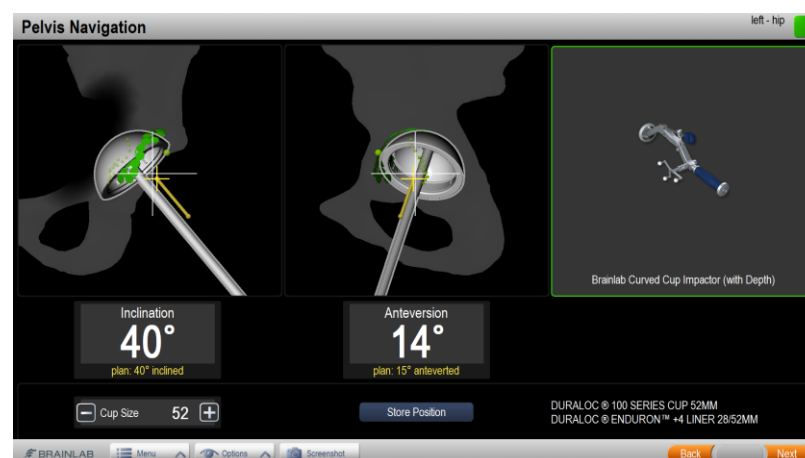
WHAT IS NEW WITH VERSION 6.0.1?

We introduced the new business model, only monthly payment, with KNEE3 years ago. To be consistent we adapted the same business model to HIP6 (details slide 4).

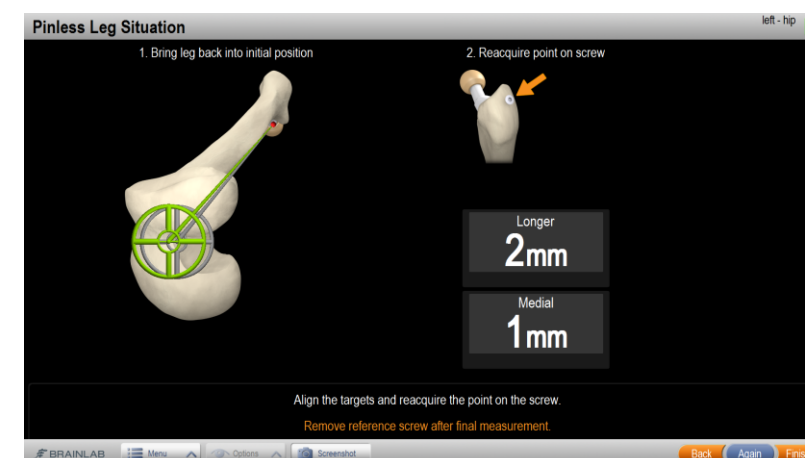
In addition to that we released the Software on Kick 1.2. With HIP6 we are **not** compatible with Curve 1.1 as the changes are too complex. We address this in HIP6 Version 6.1 which is planned for Kick2 release (End 2016).



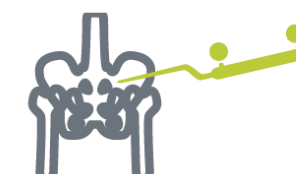
HIP6 Registration



HIP6 CUP Navigation

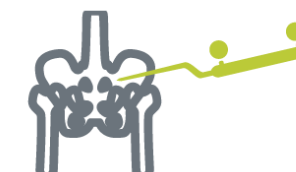


HIP6 Leg Length and Offset



 **KEY FEATURES**

KEY FEATURE	DETAILS	BENEFITS
Leg length and Offset Measurement	Hip Express is included in HIP6 THR (together with cup navigation or standalone) and Hip Base Software.	<ul style="list-style-type: none"> ✓ Easy and affordable solution ✓ Allows the surgeon to accurately and reproducibly affect/control the leg length and femoral offset ✓ Pinless array on the femur for accurate control
Cup Navigation	Cup Navigation is included in all available articles. Depth information of the inserted cup is available for Depuy Implants only.	<ul style="list-style-type: none"> ✓ Cup placement ✓ Cup depth measurement (DePuy only)
Supine and lateral registration	All provided navigation workflows support a registration for supine and lateral patient position.	<ul style="list-style-type: none"> ✓ Registration optimized for supine patient position ✓ Registration optimized for lateral patient position without reposition the patient ✓ Quick and simple registration without acquisition of the pubis points
Pelvic Array on contralateral side	HIP6 Version 6.0.1 allows to place the array on the contralateral side of the pelvis.	<ul style="list-style-type: none"> ✓ Optimal for direct anterior approach
Pelvic Tilt	Hip 6 provides the option to take the pelvic tilt into account for cup positioning	<ul style="list-style-type: none"> ✓ Adapted cup positioning based on the individual pelvic tilt ✓ Orientation on the functional plane and not pure anatomical
Depuy Implant Integration	Full implant Integration of Depuy Implants	<ul style="list-style-type: none"> ✓ Cup depth measurement ✓ Implant verification ✓ Precalibrated Impactors for Depuy Implants ✓ Takes the individual design of the implant into account
Documentation	All navigation data can be exported to a patient report for documentation and patient communication.	<ul style="list-style-type: none"> ✓ Optimal documentation of the case



PRODUCT PORTFOLIO

**BASE SOFTWARE
(incl. HIP EXPRESS)**



- Leg Length Measurement
- Leg Offset Measurement

HIP THR DEPUY



- Depuy Implant Integration
- Cup Reaming
 - Cup Navigation incl. Cup depth
 - Leg Length Measurement
 - Leg Offset Measurement

HIP UNIVERSAL



- No Implant Integration
- Cup Reaming
 - Cup Navigation
 - Leg Length Measurement
 - Leg Offset Measurement

53108 Pointer Straight for Hip



52856/58 Offset/Straight Cup Impactor Universal
52855-xx Insert for Cup Impactor
55085 Reference Array Starlock



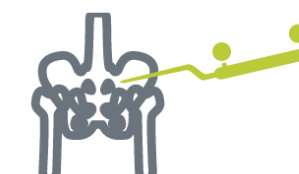
52410 T- Reference Array
52400 Pinless Femur Array
52429 Bone Fixator (Flip-Flop)



52312 Sterilization Tray Hip6



For detailed information on supported instruments and options, read the instrument user guide



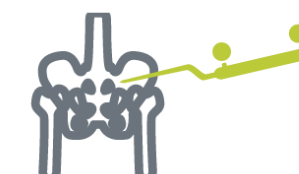
 **QUOTATION DETAILS**

HIP6 will be exclusively available through a licensing model with expiring license dates. Licenses are available from 3 months up to 3 years and can be purchased and invoiced upfront, quarterly or monthly (9% discount for 3 year subscription). Customers are eligible for updates & upgrades during the subscription period. After expiration of the software, no surgery will be possible with that software.

For customers who do not accept the pure monthly payment we offer a hybrid solution. The customer can buy a base package with a capital price and an additional maintenance article for a monthly fee. The base article (includes Express) will be installed on the system and has no license end date. The maintenance article includes Depuy implant integration with all trainings and software upgrades. After end of contract the customer will keep the base article. The base article can't be quoted individually, it comes always together with the maintenance article.

Being subscription-based with inclusion of updates and upgrades, customers immediately and continuously benefit from our latest innovations with access to up-to-date software versions. Predictable costs over time without unforeseeable upgrade costs. Reduced efforts at Brainlab for maintenance of older software versions, keeping the portfolio complexity manageable, resources allocated efficiently and focus on innovation.

NUMBER	NAME	WORKFLOWS INCLUDED
B62028	HIP NAVIGATION MONTHLY LICENSE - DEPUY	THR Depuy, THR Universal
B62029	HIP NAVIGATION MONTHLY LICENSE - DEPUY (US)	THR Depuy US, THR Universal
B62034	HIP UNIVERSAL NAVIGATION MONTHLY LICENSE	THR Universal
B62054	KNEE AND HIP NAVIGATION PACKAGE MONTHLY LICENSE	KNEE3: Motion, Universal, Express, Partial; HIP6: Depuy
B62063	KNEE AND HIP NAVIGATION PACKAGE MONTHLY LICENSE US	KNEE3: Motion, Universal, Express, Partial; HIP6: Depuy US
27010	NAVIGATION SOFTWARE HIP 6 BASE SOFTWARE	Hip Express
B62060	Hip NAVIGATION MAINTENANCE – DEPUY	THR Depuy, THR Universal
B62061	Hip NAVIGATION MAINTENANCE – DEPUY US	THR Depuy US, THR Universal
27011	UPGRADE TO HIP BASE SOFTWARE (FROM 5.1)	Hip Express
B62060	HIP NAVIGATION MAINTENANCE – DEPUY	THR Depuy, THR Universal
B62061	HIP NAVIGATION MAINTENANCE – DEPUY US	THR Depuy US, THR Universal
27012	UPGRADE TO HIP BASE SOFTWARE (OLDER THAN 5.1)	Hip Express
B62060	HIP NAVIGATION MAINTENANCE – DEPUY	THR Depuy, THR Universal
B62061	HIP NAVIGATION MAINTENANCE – DEPUY US	THR Depuy US, THR Universal



UPGRADE FOR EXISTING HIP6 (WITH OBSOLETION PROTECTION) USERS

Upgrade process for current HIP6 users:

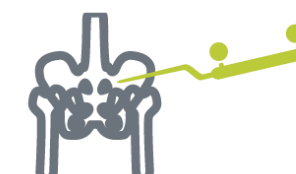
- Licenses will be booked directly by Product management/RMA for each customer
- Service orders and cases will be created and assigned to contact persons for the respective surgeons
- After approval by the surgeon, the service order/case can be assigned to the first level support for installation

UPGRADE FOR EXISTING HIP SOFTWARE USERS

Customer has...	Upgrade article required...	Workflows Included
HIP Version 5.x – 6.x <i>For DEPUY Express, THR, SR, Unlimited users. For US customers quote B62061.</i>	27011 UPGRADE TO HIP6 BASE SOFTWARE (5.x and younger) B62060 HIP NAVIGATION MAINTENANCE – DEPUY B62061 HIP NAVIGATION MAINTENANCE – DEPUY US	Express THR Depuy, THR Universal THR Depuy US, THR Universal
HIP Version older 5 <i>For DEPUY Express, THR, SR, Unlimited users. For US customers quote B62061.</i>	27012 UPGRADE TO HIP6 BASE SOFTWARE B62060 HIP NAVIGATION MAINTENANCE – DEPUY B62061 HIP NAVIGATION MAINTENANCE – DEPUY US	Express THR Depuy, THR Universal THR Depuy US, THR Universal

No Upgrade article available for NON-DEPUY users (Trade-in discount possible).

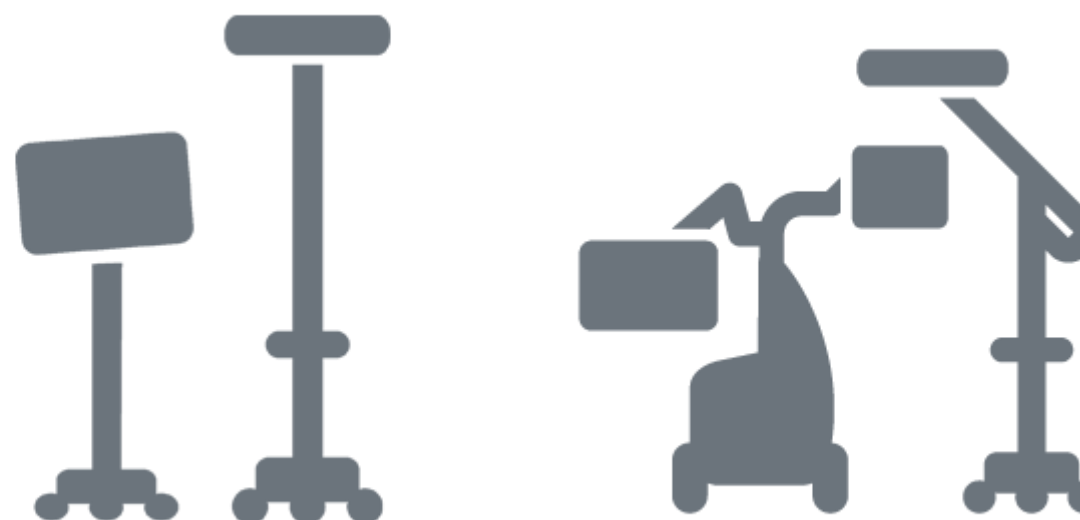
NON-DEPUY Users can only switch to Universal Software – No implant specific software available except Depuy!



PLATFORM COMPATIBILITY

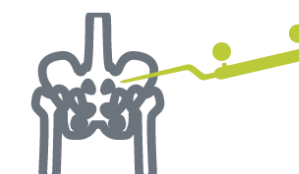
HIP6 is compatible with the following platforms:

- Kick
- Curve (1.0)
- Curve CM
- VV Sky/ Squared/ Compact (Workstation 6)
- Kolibri (2.x)



MARKETING MATERIAL

MATERIAL TYPE	TITLE	TIMING
Brochure	Portfolio Brochure Joint Reconstruction	August 2015
Surgical Technique	Surgical Technique HIP6	October 2015
Instrument User Guide	Instrument User Guide HIP6 (knee and hip separate)	September 2015



 **END OF SALE HIP6 perpetual**

As we changed the business concept for Knee and Hip (monthly payment and Depuy integration only) we will set all HIP6 perpetual articles to End of Sale September 2015.

The following article numbers are affected:

NUMBER	NAME
26100-10A	NAVIGATION SOFTWARE HIP - UNIVERSAL
26100-50A	NAVIGATION SOFTWARE HIP THR - DEPUY
26100-51A	NAVIGATION SOFTWARE HIP THR - DEPUY US
26100-70A	NAVIGATION SOFTWARE HIP THR - SMITH&NEPHEW
26100-71A	NAVIGATION SOFTWARE HIP THR - SMITH&NEPHEW US
26100-15A	NAVIGATION SOFTWARE HIP THR - KYOCERA
26101-10A	NAVIGATION SOFTWARE HIP EXPRESS
26103-10A	NAVIGATION PACKAGE HIP UNLIMITED
26103-11A	NAVIGATION PACKAGE HIP UNLIMITED US
26102-10A	NAVIGATION SOFTWARE HIP SR - UNIVERSAL
B62033	HIP SR NAVIGATION MONTHLY LICENSE
B62031	HIP NAVIGATION MONTHLY LICENSE (US)
B62030	HIP NAVIGATION MONTHLY LICENSE
28000-80	UPGRADE TO NAVIGATION SOFTWARE HIP THR 6.0 FROM EARLIER VERSION
28000-81	UPGRADE TO NAVIGATION SOFTWARE HIP SR 6.0 FROM EARLIER VERSION
28000-82	CROSSGRADE TO NAVIGATION SOFTWARE HIP THR 6.0 FROM HIP EXPRESS
28000-83	UPGRADE TO NAVIGATION SOFTWARE HIP UNLIMITED 6.0 FROM HIP UNLIMITED EARLIER VERSION
28000-84	CROSSGRADE TO NAVIGATION SOFTWARE HIP UNLIMITED 6.0 FROM HIP THR OR HIP SR
28000-89	CROSSGRATE TO NAVIGATION SOFTWARE HIP THR 6.0 FROM HIP SR