

Manufacturer  
**GREATBATCH MEDICAL SA**  
 7, L'Echelette  
 2534 Orvin  
 Switzerland  
 Tél. : +41 (0)32 358 01 11  
 Fax : +41 (0)32 358 01 00  
 e-mail : orthoeurope@greatbatchmedical.com

**IMPORTANT NOTICE**  
 When reaming bone it is essential that a firm grip on the handle is maintained to minimize any risk that the reamer cuts eccentrically.



**NON STERILE**

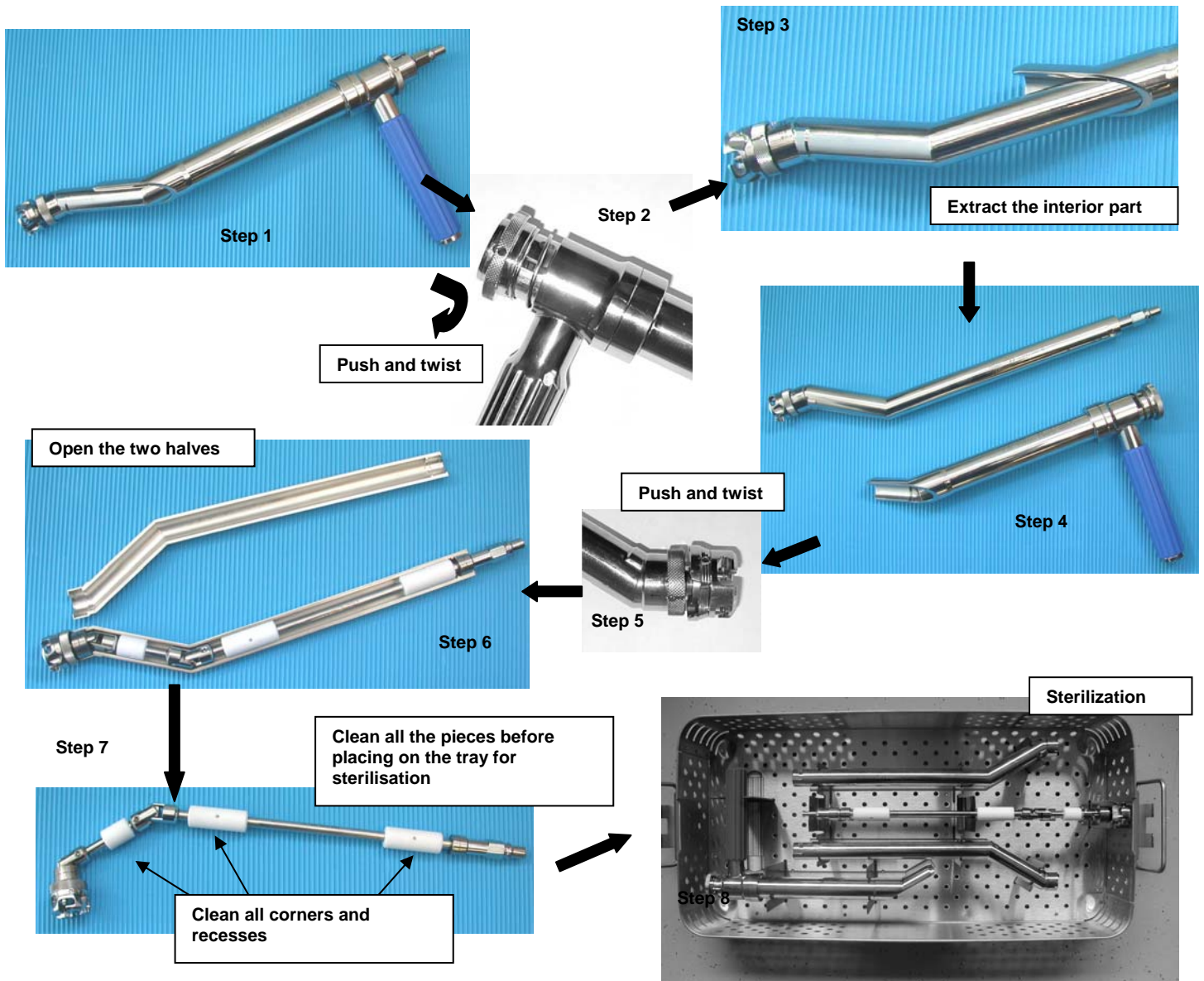
## OFFSET REAMER HANDLE : INSTRUCTIONS FOR ASSEMBLY AND DISASSEMBLY TO ALLOW CLEANING AND STERILISATION

GREATBATCH MEDICAL instruments are not supplied sterile and should be cleaned and sterilised before first use. Instruments should be disassembled as shown for cleaning and sterilisation.

**CLEANING :** The instruments should be soaked, cleaned and rinsed in purified water. Mild detergent, neutral pH solutions may be used, but no strong acid, strong alkali or fat based detergent should be used. A soft bristle brush may be used to clean hard to reach recesses.

**STERILISATION :** These parts have been validated to achieve a  $10^{-6}$  sterility assurance level using steam sterilisation with a pre-vacuum cycle at 134°C for 3 minutes. It is important that process parameters are validated for each facility's individual type of equipment and load configuration. Each cleaning and sterilisation facility is responsible for the procedures of cleaning and inspection to ensure that the parts are processed in a manner to achieve adequate steam penetration and drying. EtO, gas plasma and other cold techniques should not be used.

### DISASSEMBLY



Manufacturer  
**GREATBATCH MEDICAL SA**  
7, L'Echelette  
2534 Orvin  
Switzerland  
Tél. : +41 (0)32 358 01 11  
Fax : +41 (0)32 358 01 00  
e-mail : orthoeurope@greatbatchmedical.com

**IMPORTANT NOTICE**  
When reaming bone it is essential that a firm grip on the handle is maintained to minimise any risk that the reamer cuts eccentrically.



**NON STERILE**

## ASSEMBLY

Each element of the instrument forms a unique set and in no instance should the parts of one be mixed with those from another reamer handle.

