

# Smith & Nephew NPWT

Troubleshooting devices and dressing site

# Troubleshooting alarms

Troubleshooting is the same for both VISTA and EZCARE.

All aspects of the vacuum system are the same from the Bacterial Overflow Filter to the patient.

The audible alarm can be silenced for:

5 minutes for the EZCARE by pressing the alarm suppress button.

2 minutes for the VISTA by pressing the reset button.

**VISTA**  
Low vacuum  
High pressure  
Low battery



**EZCARE**  
Low vacuum  
Low battery



Low vacuum alarm

## Low vacuum alarm

Alarm will sound after 2 minutes of being unable to maintain desired pressure setting.

Designed to warn clinicians of low pressure, possibly caused by a leak.

# Causes for low vacuum alarm

Canister Leak

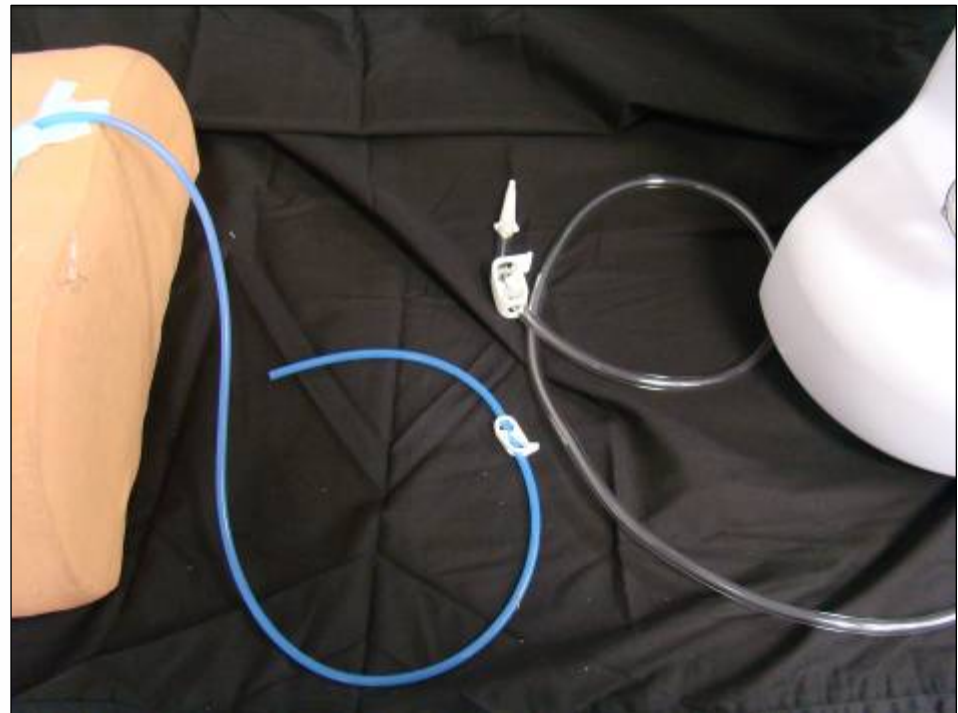
Connective Tubing Not Secure

Loss of Suction at Dressing Site

## Determine origin of vacuum loss

Close clamps on both connective tubing and drain tubing.

Disconnect the drain from the connective tubing.



## Determine origin of vacuum loss

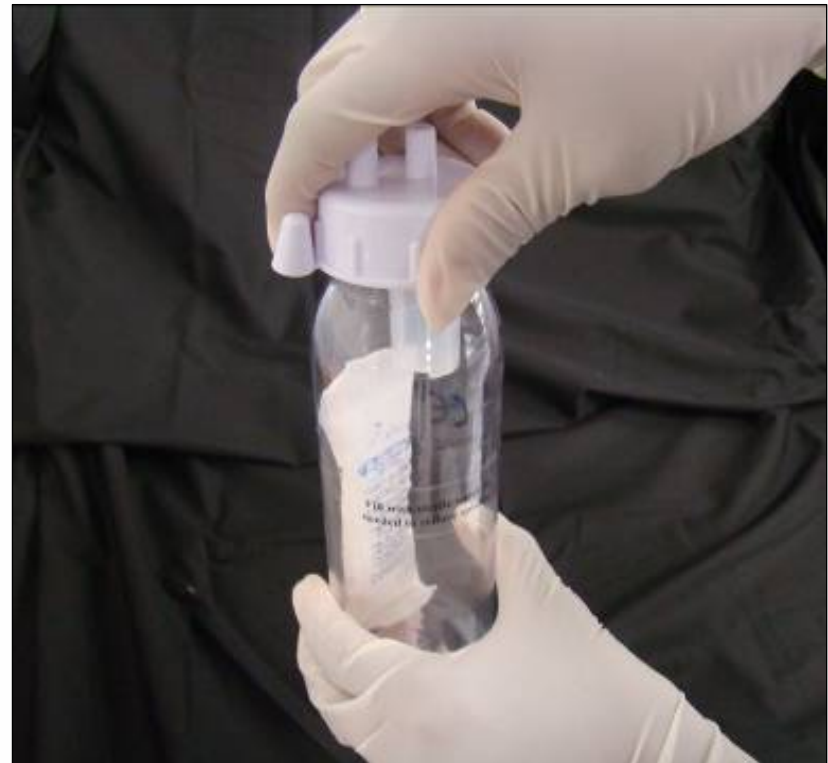
If the pump resumes set level of vacuum; the source of the low vacuum alarm is related to the dressing site/patient.

If the pump does *NOT* resume the set level of vacuum.....the low vacuum alarm is located at pump, including canister and tubings.

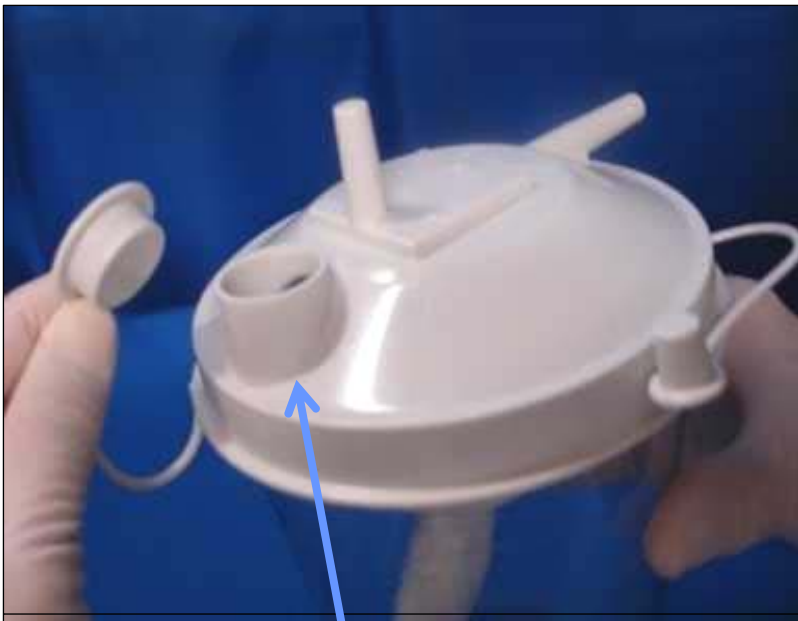
## Low vacuum troubleshooting – small canister 250cc

### Canister Lid

- Ensure lid is secured tightly
- Check all tubing connections



## Low pressure troubleshooting – large canister 800cc



### **Elimination Port**

- Check that it is in place and secure



### **“IN” Port cap**

- Check that it did not get trapped under canister lid

\* *Check all tubing connections*

## Low vacuum troubleshooting at dressing site/patient

*Look* for the “raisin like”  
appearance.

*Listen* for a “hissing” sound  
indicating a leak.

*Feel* the dressing should be  
hard to the touch.



# Low vacuum troubleshooting at dressing site/patient

## Possible site of leak

- Where drain exits wound and/or Transparent Adhesive Film
- Wrinkle or crease
- Skin fold or crevice

## Interventions to seal leak

- Pinch paste around drain.
- Secure area where tube exits transparent dressing with waterproof tape.
- Seal film edges with waterproof tape, film dressing and/or skin prep.



Low battery alarm

# Low battery alarm

Visual and audible alarms warn when battery is low .

Alarm sounds when 10 minutes of battery life is left on the VISTA.

Alarm will sound when 30 minutes of battery life is left on the EZCARE.

## Battery life

VISTA: Up to 12 hours

EZCARE: 40 hours



# High vacuum release and alarm

Only required on V1STA

## V1STA high vacuum release and alarm

The V1STA has a safety feature protecting the patient against accidental high vacuum situations.

If vacuum becomes too great, the V1STA immediately releases and adjusts to safe pressure setting.

If unable to adjust to a safe setting, the pump will alarm and power off.

A high vacuum situation will only occur if there is a malfunction in the device.

Solidifier

# Solidifier

Gels/solidifies exudate to decrease spill and splash risk.

Does not have deodorizer or decontaminant properties.

Do not open packet – it will swell and break when exposed to exudate.

Do not use canister packet if solidifier packet is broken.

Do not expose solidifier to plumbing system.

Discard canister and solidifier as one unit.

# 800cc canister reassembly

# Troubleshooting reassembling shut-off valve

## Step 1

Replace connector.

## Step 2

Insert float valve mechanism.

## Step 3

Insert the 3 pegs into the 3 legs of the connector.



Questions/discussion