

Smith & Nephew NPWT

Basic dressing procedure

Wound sealing kits

Primary contents:

- Non-Adherent Gauze
- Antimicrobial Gauze
- Silicone Drain
- Transparent Adhesive Dressing
- Tubing, adapter connector and clamp

Kits also include:

- Saline
- Ostomy Strip Paste
- Waterproof tape
- Skin barrier prep pads



Cleanse wound bed and pat dry



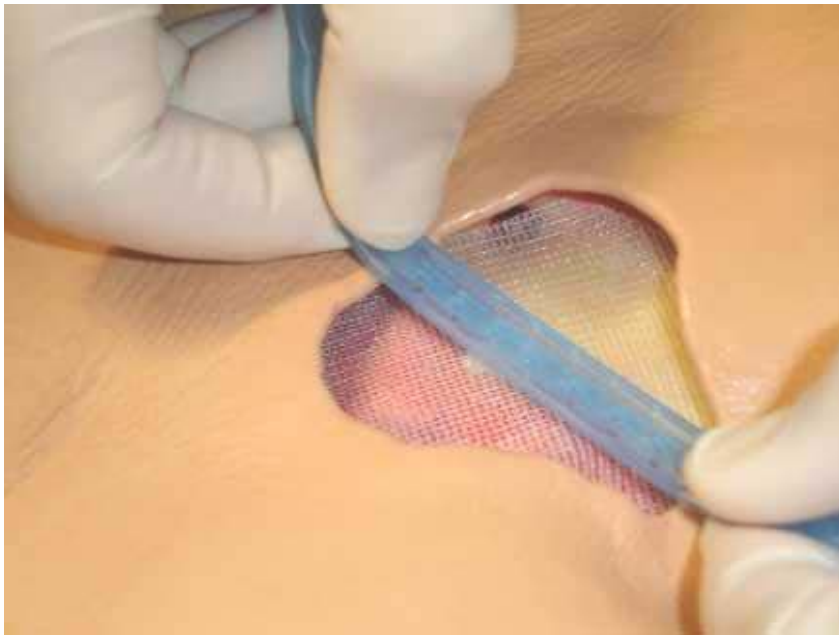
Apply skin sealant and allow to dry



Lay non-adherent gauze across wound bed



Cut the drain 1 inch shorter than the length of the wound. Curl the drain if using a channel or round drain.



Insert drain into wound bed.
A layer of gauze must be placed between the drain
and the wound bed.



Apply ostomy strip paste



Fill wound with saline moistened antimicrobial gauze



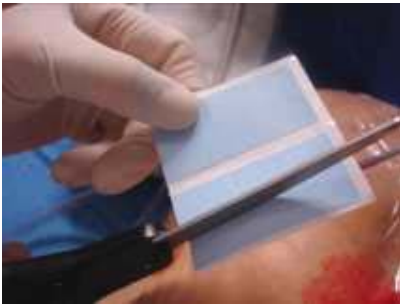
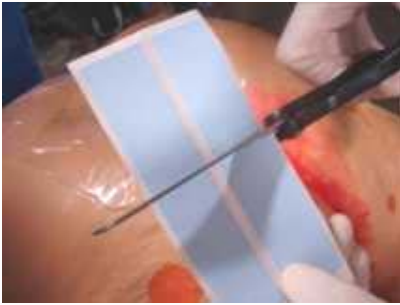
Place transparent dressing over the wound and seal



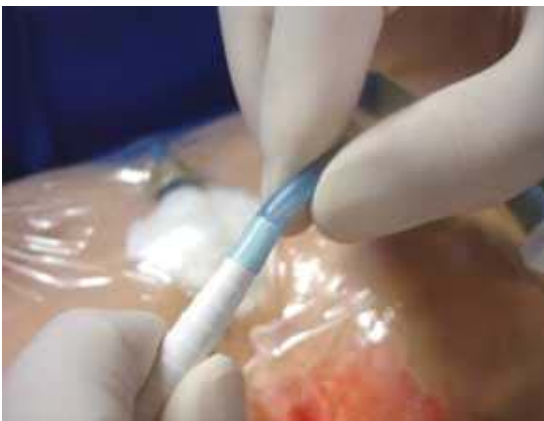
Create a seal by pinching the strip paste



Secure the drain tubing with waterproof tape



Connect the drain to the canister and begin suction



Finished dressing

Will have a “raisin like” appearance and be firm to the touch.



Questions/comments?